



Parchmore Road | Thornton Heath | CR7 8LW

£650 Per Month



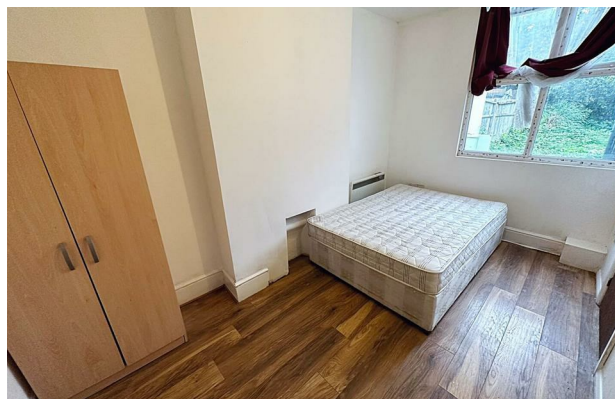
Parchmore Road |
 Thornton Heath | CR7 8LW
 £650 Per Month

Nestled in the vibrant area of Thornton Heath, Parchmore Road offers an excellent opportunity for those seeking a comfortable living arrangement in a House of Multiple Occupancy. This property features a well-appointed bathroom exclusively for your use, ensuring privacy and convenience. You will share a spacious kitchen with five other tenants.

The room comes fully furnished, allowing you to settle in effortlessly. All bills are included in the rent, with the exception of electricity, making budgeting straightforward and hassle-free. A weekly cleaner is provided for the communal areas to help the tenants with the regular upkeep of the shared areas.

The location is particularly advantageous, with easy access to local amenities and transport links, making it ideal for commuting or exploring the surrounding areas. This property is available immediately, making it a perfect choice for a single individual looking for a new home.

- All bills included, except electricity
- Own shower and toilet
- Weekly cleaner for communal areas
- Great location in Thornton Heath
- House of Multiple Occupancy
- Available immediately for move-in
- Shared kitchen with 5 tenants
- Furnished
- Close to local amenities
- Viewing recommended



Energy Efficiency Rating		Current	Potential
<i>Very energy efficient - lower running costs</i>			
(92 plus) A			
(81-91) B			84
(69-80) C			
(55-68) D		62	
(39-54) E			
(21-38) F			
(1-20) G			
<i>Not energy efficient - higher running costs</i>			
England & Wales		EU Directive 2002/91/EC	

Council Tax Band D
 EPC Rating D

467 Norwood Road
 West Norwood
 London
 SE27 9DJ
 02087610830
 dean@movinginn.co.uk
 www.movinginn.co.uk